

Advanced Electrical Materials MSPro I 4 Surface Profiler



Morgan MSPro I4 - the new improved Surface Profiler not only can accurately measure and record surface conditions on commutators and slip rings but also offers:-

- A solid easy to mount sensor that can be fitted to a vast range of holder sizes to cope with extreme environments including vibration
- Easy to use responsive industrial Touch Screen
- Optimised sensor head that can easily be used on Helical Groove Slip Rings
- Zero setting light indicators for easy set up
- Previous Morgan supplied profiler measurements can be stored and combined on MSPro I4
- Extra large memory capacity for data storage and can be edited on the data acquisition box
- Comes in a robust carrying case including all attachments



All Inclusive - All you need to profile your commutator or slip ring

Included in the package is The MSPro I4 in a robust lightweight case including:-

- DASPro I4(Data Analysis Software)
- Sensor & clamp, sensor sleeve, and sensor spacer set
- Download cable
- AC power adaptor
- G Clamp
- Flashlight & pen



Direct Data collation and storage

The measurement tablet is easy to use with:-

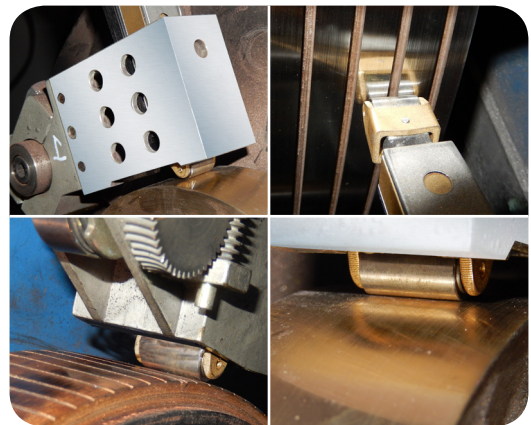
- Responsive touch screen
- Encased in a robust housing
- Capability for analysing at the point of measurement
- Software capable of uploading previous profiler data supplied by Morgan
- Can be used with any PC via USB
- Energy saving automatic sleep mode



Versatile to suit a variety of applications

From steel mill motors to wind turbine slip rings the MSPro14 covers all your profiler requirements, for a highly accurate reading.

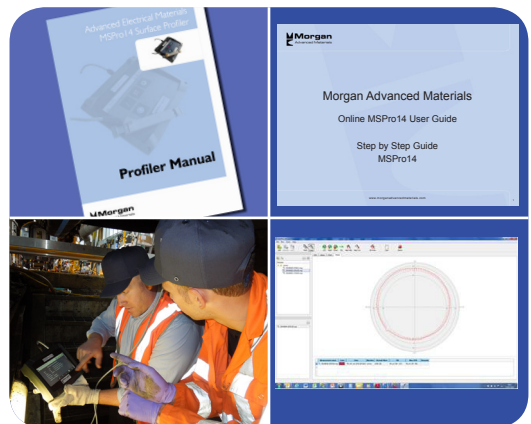
- Optimised sensor head for commutators, slip rings and helical grooved slip rings
- Designed for an easy fit into the brush box
- Easy switch from imperial to metric
- Longer sensor than previous version for use in the longer wind power holders



Training and Technical support

The Morgan team are always on hand to support your training requirements offering:-

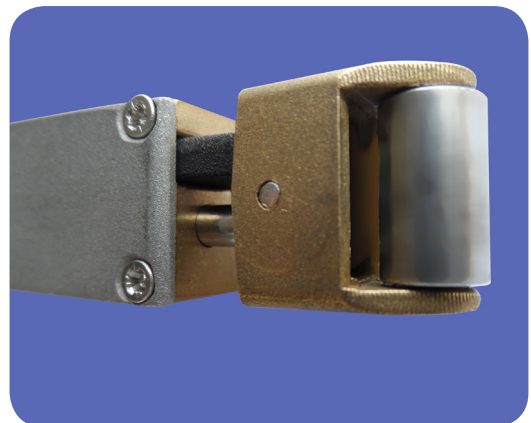
- Site visits for demonstrations
- Hard copy in-depth manual
- Online step by step guide
- Technical handbooks and technical wall charts sharing brush and holder best practices
- Technical and wall charts explaining common brush and holder issues
- Further training courses on brushes, holders, commutation and slip rings can be booked through our customer service teams




After Sales Support

The MSPro14 is the latest technology for surface profilers and Morgan offer:-

- Calibration Service
- Components available separately
- Software upgrades via online downloads
- Download support- please do not hesitate to contact us



Specifications	MSPro I4™ Surface Profiler	Notes
Range	±20 mil (±500 µm)	Imperial/Metric is user-selectable
Resolution	0.04 mil (1 µm)	
Accuracy	±2% ±0.16 mil (4 µm)	At ambient temperature of 73±9°F (23 ± 5°C)
Sampling Interval	Maximum recording speed 4 in/s (100 mm/s)	Slip ring segment size 40 ± 4 mil (1 ± 0.1 mm) Recordings taken in "Shape" mode contain 4 samples per segment
Memory Data Storage	100+ named Data Sets 100+ recordings per Data Set	Each recording has time/date stamp
Capacity	100,000+ samples per recording 32 MB (approx.) Up to 255 Alpha-Numeric characters.	Total # of samples depends on # of data sets Flash Memory
Display Type	Colour LCD	
Resolution	640 x 480 pixels	
Viewing Area	6.0"x3.4" (153mm x 86mm)	
Backlight	LED	
Termination Displacement	Custom 8 pin round plug	

Specifications	MSPro I4™ Surface Profiler	Notes
Communications	USB 2.0	
Battery Type	Li-Ion	Imperial/Metric is user-selectable
Voltage	3.7 Volts nominal	
Capacity	7800 mAh nominal	
Operating Time	6 hours (nom.)	
Charger & Conditioner	Charge over USB	USB charger is included in kit
Charge rate	1.5 A (with included USB charger) 0.5 A (with PC charger port)	4.5 hrs for complete charge (nom.) 14 hrs for complete charge (nom.)
Mechanical Size	9.7"Wx6.1"Lx3.0"H (200mmWx175mmLx-55mmH)	
Weight – Base Unit	2.2 lb (1 kg)	
Complete Kit	8.8 lb (4 kg)	
Environmental Temperature/ Humidity	32°F to 122°F (0°C to 50°C) 80% RH 32°F to 86°F	Non-condensing
Operating	70% RH 32°F to 122°F 14°F to 140°F (-10°C to 60°C) 95% RH	Non-condensing
Storage		 Radiated and conducted emissions RF field, ESD and fast transient immunity
EMC	EN 61000-3-2:2006/A2:2009 EN 61000-6-2:2005	

For all enquiries, please contact our specialist sales and manufacturing sites:

The Netherlands

Morgan Advanced Materials
Oude Veiling 3
1689 AA Zwaag
The Netherlands

T +31 229255555
F +31 229255541
salesNL@morganplc.com

China

Morgan Advanced Materials
4250 Longwu Rd.
Shanghai 200241
China

T +86 (21) 64342745
F +86 (21) 64342850
chinasales@morganplc.com

USA

Morgan Advanced Materials
251 Forrester Drive
Greenville, SC 29607
USA

T +1-864-458-7777
F +1-864-281-0180
nasales@morganplc.com

Asia

Morgan Advanced Materials
150 Kg Ampat
#05-06A KA Centre
Singapore 368324

T +65 6595 0000
F +65 6595 0005



Follow us on
<http://www.youtube.com/morganadvanced>



Follow us on
<https://twitter.com/morganadvanced>



Follow us on
<http://www.linkedin.com/company/morgan-advanced-materials>



Follow us on
<https://www.facebook.com/MorganAdvancedMaterials>